

Kawasaki

Assembly Instructions

Model:	TERYX KRX / TERYX KRX4
Description:	Sport Front Bumper
Part Number:	99994-1301
Assembly Time:	15 Minutes

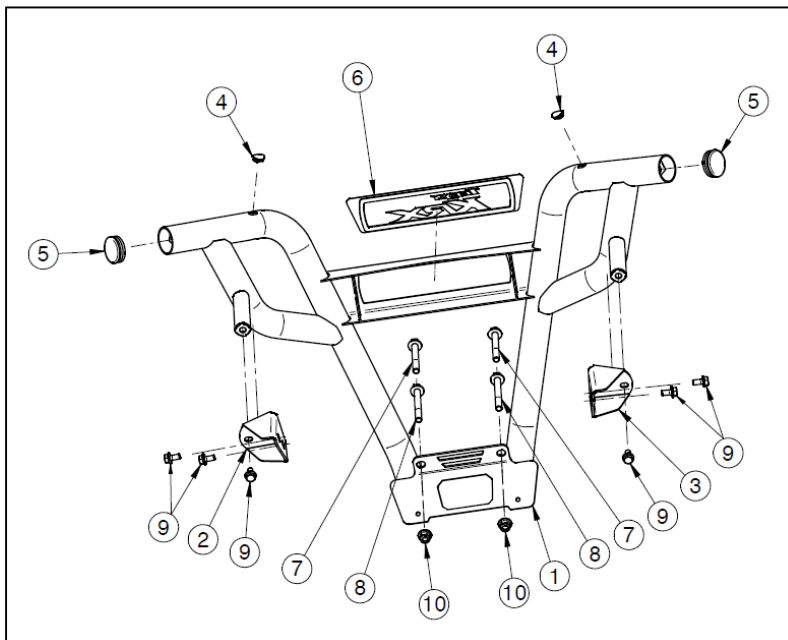
Before you begin, read through these instructions and check that all parts are present. Please note that Kawasaki cannot assume any responsibility for damage resulting from incorrect installation. Kawasaki recommends that all genuine accessories should be fitted by an authorized Kawasaki dealer.

The following symbols indicate the information for proper installation and operation in this instruction.

NOTE : NOTE indicates information that may help or guide you in the operation or service of the vehicle.

- Indicates a procedural step or work to be done
- Indicates a procedural sub-step or how to do the work of the procedural step it follows. It also precedes the text of a NOTE.

Parts List			
No.	Component Name	Qty	Remark
1	Front Bumper	1	
2	Left Mounting Bracket	1	
3	Right Mounting Bracket	1	
4	Plastic Cap for M8 Threaded Hole	2	
5	Plastic End Cap	2	
6	Front Cap	1	
7	Hex Flanged Bolt M10 x 70	2	
8	Hex Flanged Bolt M10 x 80	2	
9	Hex Flanged Bolt M8 x 16	6	
10	Hex Flanged Nylon Nut M10	2	

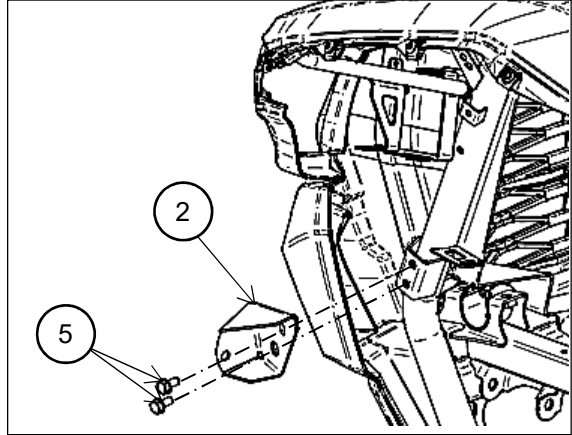


Installation Instructions

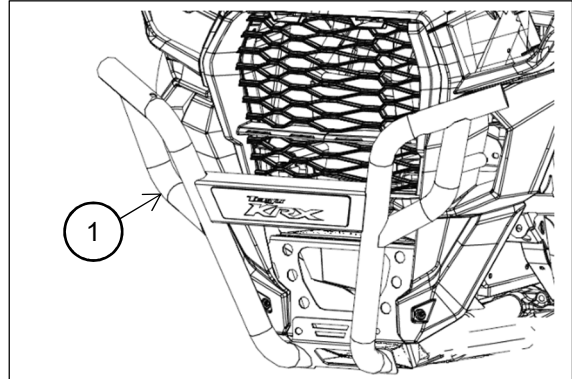
- Park the vehicle on level ground, set the parking brake, turn off the ignition switch.
- Install the left mounting bracket (2) and the right mounting bracket (3) to the vehicle frame brackets using four M8 x 16 hex bolts (9). Leave loose until final step. (Only the left side is shown on the picture)

NOTE

- *If you want to install a LED light bar (99994-1307) in the bumper, remove the front cap (6) and install the light bar before installing the bumper on the vehicle.*



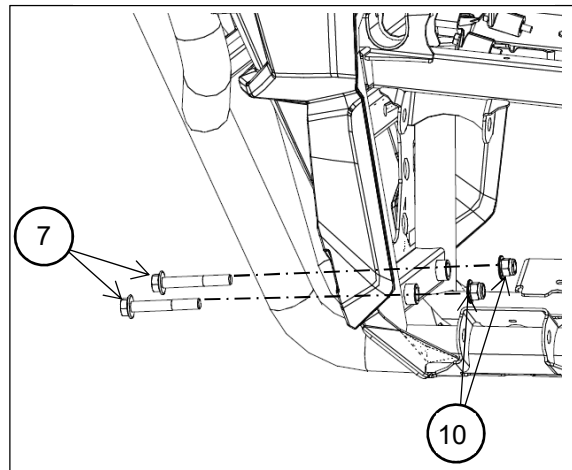
- Place the front bumper (1) into position. Line up the holes with the mounting points of the vehicle and the brackets (2)(3) installed in the previous step.



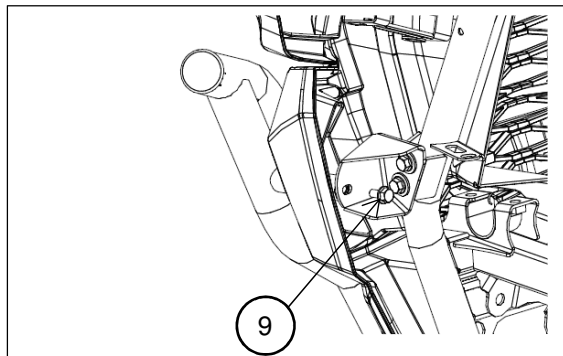
- Install the two M10 x 70 bolts (7) and two M10 nuts (10) at the bottom of the bumper. Finger tighten only.

NOTE

- *If you have the winch mount installed, use two M10 x 80 (8) bolts instead of the two M10 x 70 bolts (7)*



- Screw the two remaining M8 x 16 bolts (9) through the mounting brackets (2)(3) installed previously and into the front bumper (1). Finger tighten only. (Only the left side is shown on the picture)
- Tighten all the bolts. Starting with the bottom bolts.
Torque – M8 Bolts: 19 N·m (1.94 kgf·m, 14 ft·lb)
Torque – M10 Bolts: 38 N·m (3.87 kgf·m, 28 ft·lb)



Enjoy your Kawasaki Genuine Accessory!